



Character Acceptance Technology Software

CATS VISION SYSTEM

The CATS Camera System is developed by VPTS.

- Vision System for OCR and Barcode Matching
- Sequence Checking
- 1-16 Cameras
- Mail Sort Output
- Data Logging Output File
- Stop On Imported Data Check



SCORPION
VISION SOFTWARE®

Vision system for Inserters, Poly-wrapping machines and all other mailing equipment.

Sites available in the UK for demonstration of our camera system.

Most camera systems have old outdated technology. We use the latest versions of drivers, hardware and software.

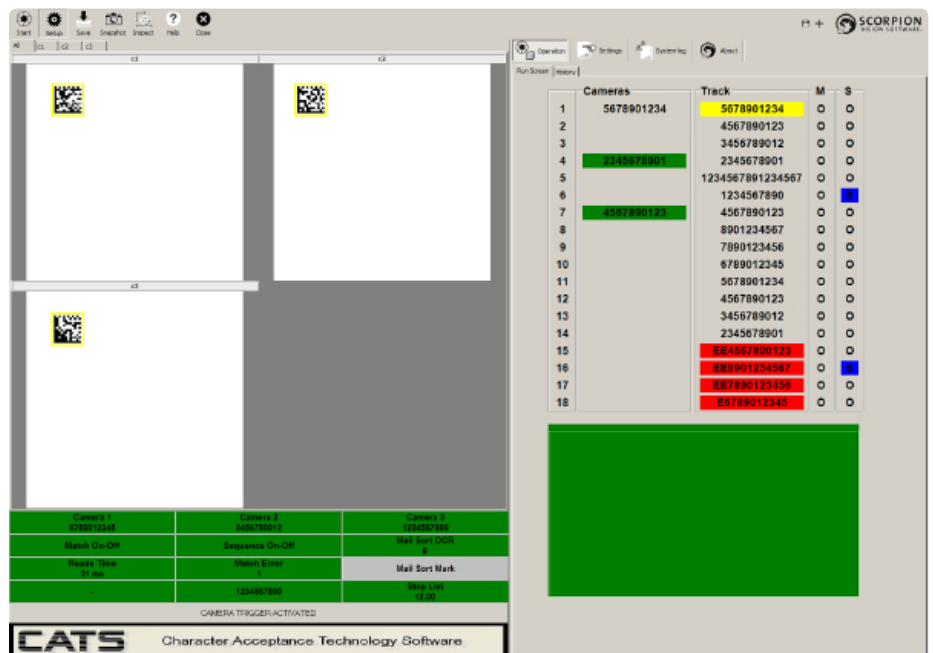
The CATS system is based on Scorpion Vision Software, an industrial automation package that is used widely throughout industry in many sectors including automotive, food and beverage, oil and gas, general manufacturing and aerospace.

Scorpion Vision is a mature and well developed machine vision product that offers the robustness and reliability that ensures CATS operates 24 hours per day 7 days a week.

We integrate an easy to use interface between the Scorpion Software running in the background and the user.

Over the years we have been involved with many different types of vision systems and know the limitations and costs involved .

Which leads us to our system : Developed over 3 years and from looking at all the possible suppliers and vision systems available. We think we have the best combination of hardware and software. *Scorpion Vision Software, Unibrain Cameras, Omron PLCs and Controls.*



Character Acceptance Technology Software - User Interface



Character Acceptance Technology Software

THE SYSTEM

MATCHING: up to 16 Cameras

SEQUENCE CHECKING: from Camera 1

MAILSORT OUTPUT: reads either a change in string of characters, an asterisk or any other character present ,to operate a kicker on the conveyor.

DATA CHECK STOP: reads data from file or from data entered by operator and checks to see if the data is read from cameras, when the system reads the data, system stops machine at inserting area.

LOG FILES: creates log files for all camera read data and a match file with all matched items.

OPERATOR INPUT: when ready to run system operator enters user details to add to log file.

OCR , 1D AND 2D BARCODES

EQUIPMENT

VPTS offer a choice of parts, maintenance and ad-hoc back up services for a wide range of equipment, including:

- Buhrs
- Philipsburg
- Bell & Howell
- Böwe
- Laurenti
- GUK
- MB
- Müller
- Streamfeeder
- Sure-Feed
- Kern
- Altech
- Etipack
- Spedo
- GBR
- IMER Printing Presses

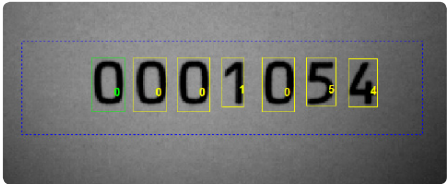


FEATURES

- Easy modification and added options
- Output read through envelope window before conveyor.
- Bespoke System ; for all environments and applications.
- Windows 7, 8 versions compatibility



- Camera system can be added to online systems which have become redundant or outdated.
- Raffle ticket numbers can easily be read.
- Train any font with a space around character.



- Cameras can be moved between feeders on machines.
- On a Buhrs machine it is possible to match front or back of envelope with any feeder.
- Used on our GBR sheet feeder systems.
- Cameras to suit all applications.

CUSTOMER REFERENCE

“kpm’s requirements for a camera solution were very specific. Above all it needed to be both quick and easy to setup by operators, have the ability to read accurately from a vast array of lasered or ink jetted substrates and font sizes. The system supplied by VPTS has definitely proved itself over the last three years and the support from them has been excellent. As a result of this success VPTS installed a second system towards the end of 2012.”

Graeme Burton
Key Print and Mailing Solutions

FOR MORE INFORMATION

VPTS
Unit D1-D2
Twydall Business Centre
Lower Twydall Lane
Gillingham
Kent
ME8 6XX

Phone: 0844 3352996
Fax: 01634 376662
E-mail: cats@vpts.co.uk

vpts.co.uk