

Sony SmartCam running Scorpion Vision Software®



Sony SmartCam Scorpion Standard Version 5 Introduction Offer at 3950 €.

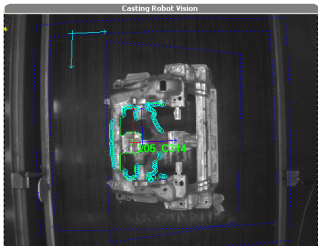


The open architecture and compact Sony SmartCam XCI-SX1 is the perfect companion for Scorpion Vision Software®.

We have added new features to support the XCI-SX1 Sony SmartCam including a special Scorpion XP Embedded Image with the Scorpion framework installed.

The Sony SmartCam running Scorpion Vision Software® is specially well suited for robot vision applications. The camera is directly mounted to the robot communicating over RS-232 or tcp/ip.

Automotive casting parts are reliably located with mm accuracy with the Sony SmartCam. This is the result of 6th order lens calibration, adaptive thresholds, redundant six point robot calibration and robust and sub-pixel object location based on PolygonMatch™ technology resolving scale, rotation and perspective.



PASS

Pick point: x=1048.2 , y=481.0 , angle=-89.2 deg

Sony SmartCam running Scorpion Vision Software® used in robot vision.

Scorpion Vision Software® used in SmartCam is the same software as used in advanced PC based vision systems. This makes an eventual upgrade quick and easy. Multiple SmartCams are maintained over tcp/ip from a PC running the Scorpion Maintenance software.

Type no	Product	Description	Price Euro
50-030	Sony Scorpion Standard SmartCam XCI-SX1	Sony SmartCamera XCI-SX1, monochrome 1280 x 1024, 256 Mbyte RAM, Trancend 1 Gbyte Compact Flash, Windows XP embedded, Scorpion Standard	3,950

Normal price is 5,950 €.
Offer valid until October 30, 2006.

Tordivel AS
Storgata 20, N-0184 Oslo, Norway
Phone +47 2315 8700 • Fax +47 2315 8701
office@tordivel.com • www.scorpionvision.com

