

## SONY SMARTCAM RUNNING SCORPION VISION SOFTWARE®



*The Compact Sony SmartCam XCI-SX1*

In close cooperation with Sony, we have integrated the Scorpion Vision Software® into the XCI-SX1 SmartCam.

The combination of high resolution images and Scorpion Vision Software's world class gauging tools is ideal for high precision measurements and robot systems.

Clear monochrome images are captured by the advanced 1/2" type IT CCD sensor at 1280x1024 SXGA resolution and are processed. Vertical and Horizontal binning reduces image size to 640 x 512 and improves image quality.

A full version of the Scorpion Vision Software®, running on top of the Windows XP Embedded operating system, processes the images inside the camera.

The open architecture Sony SmartCam is the perfect companion for Scorpion Vision Software®. The Intelligent Camera is supported by the standard Scorpion release.

In addition five bundles are released:

- Sony Scorpion Lite SmartCam
- Sony Scorpion Basic SmartCam
- Sony Scorpion Standard SmartCam
- Sony Scorpion Barcode SmartCam
- Sony Scorpion MatrixCode SmartCam

The Scorpion Vision Software® used in SmartCam is the same software as used in advanced PC based vision systems. This makes an upgrade quick and easy.

### APPLICATION AREAS

*The Sony Scorpion SmartCam is especially well suited for robot vision applications. The camera is directly mounted with an RS-232 to the master robot.*

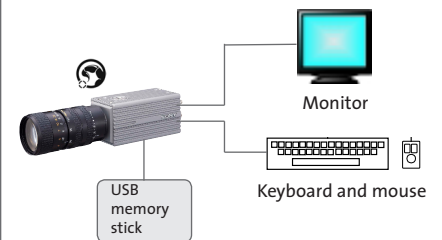
### EQUIPMENT

*Scorpion Vision Software®  
Sony SmartCam XCI-SX1*

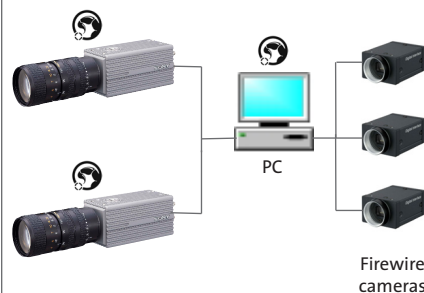
### STANDALONE OPERATION



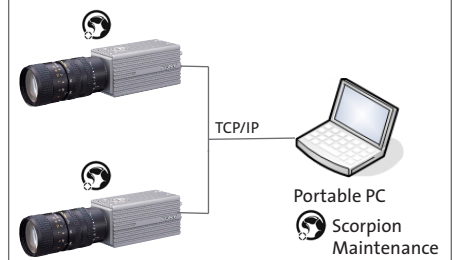
### STANDALONE CONFIGURATION



### NETWORK OPERATION



### NETWORK CONFIGURATION

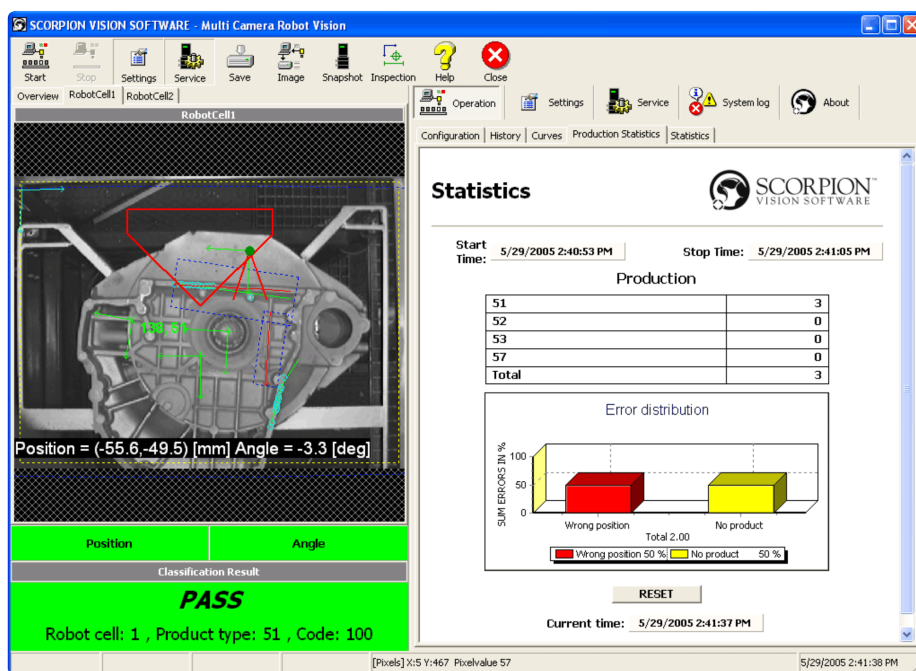


The portable PC is used for profile configuration, profile transfer and as a remote desktop.

 - running Scorpion Vision Software®



## TECHNICAL DATA



Robot Vision System using Sony SmartCam with Scorpion Vision Software®.

For more information:

Tordivel AS  
 Phone +47 2315 8700  
 Fax +47 2315 8701  
[office@tordivel.com](mailto:office@tordivel.com)  
[www.scorpionvision.com](http://www.scorpionvision.com)

For more information on the  
 Sony SmartCam see  
[www.sonybiz.net/vision](http://www.sonybiz.net/vision)

### TECHNICAL DATA

#### Operating System

- Windows XP Embedded
- 1 GByte Flash Card

#### Network Support

- XP Remote Desktop
- XP Remote Assistance
- FTP / HTTP
- Remote Disk Sharing
- TCP/IP

#### Language Support

- English and Norwegian

#### Compact and Lightweight

- 55 (W) x 55 (H) x 110 (D) mm
- 400 g

#### Sony Smart Camera

- AMD Geode 400 MHz
- 256 MByte DDR-SDRAM
- 12 Volt DC power
- Monochrome 1/2" CCD
- SXGA - 1280x1024 resolution
- Progressive Scan
- Frame rate up to 15 fps
- External trigger
- Ethernet, RS-232 and Digital IO

More details are found in Sony SmartCam - XCI-SX1.pdf

**SONY**®

Specifications might change without any notification.

Scorpion Vision Software® is a registered trademark of Tordivel AS.