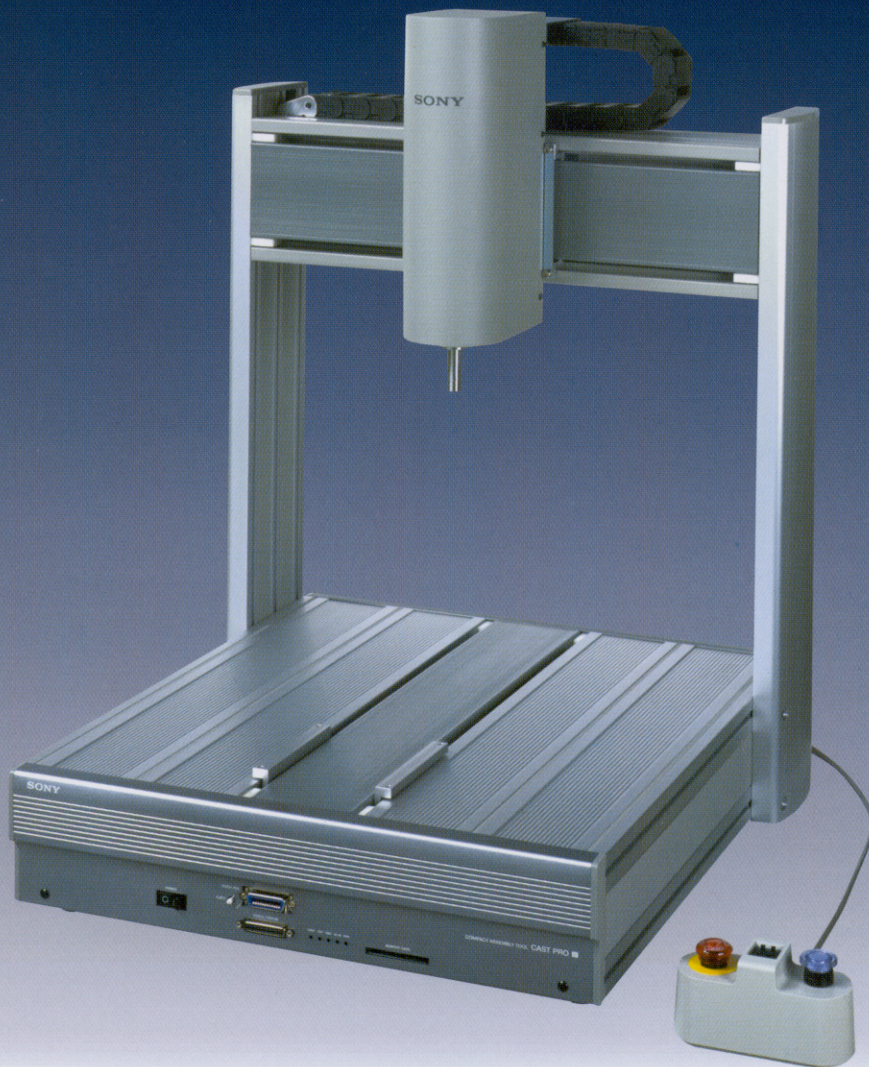


SONY

CAST

CAST PRO II

Desk-Top Robot



High-performance CAST-PRO II achieves professional function.

Capable of 4-axes Simultaneous Control, and Multi-Task.

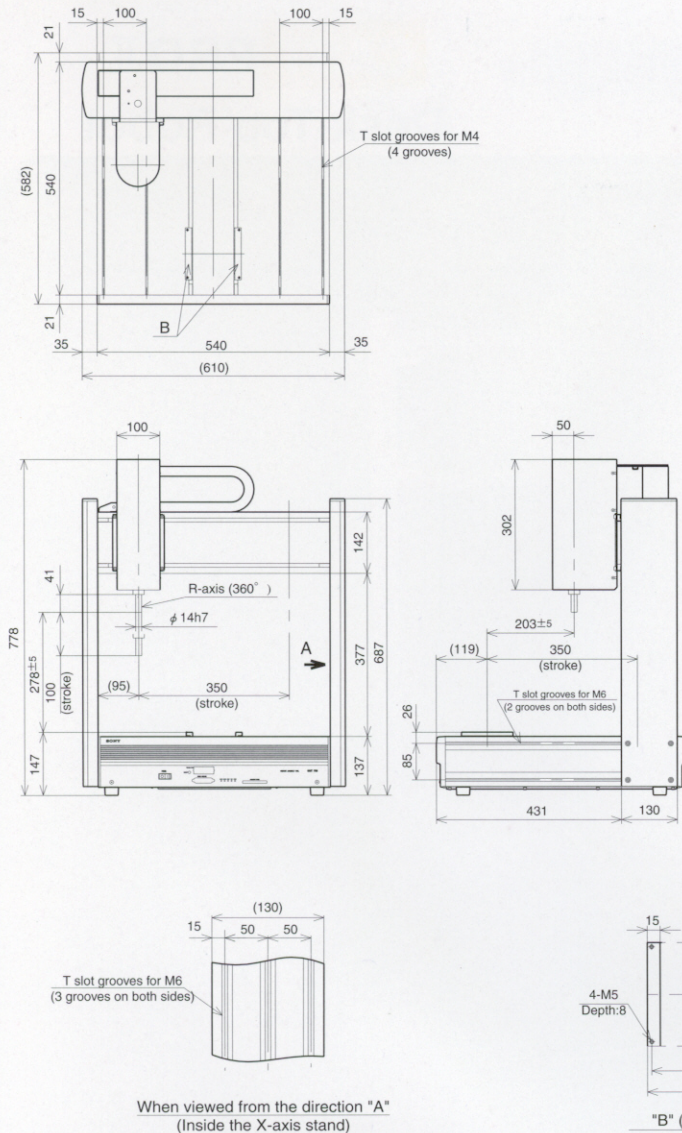
- Easy operation using Memory Card and Teaching Pendant.
- Realizes 4-axes simultaneous control and 3-dimensional linear/circular interpolation.
- Programmable type Robot language (Sony LUNA language) is also available.
- Professional function - Multi-Task, PLC, and communication, which allows input/output expansion up to 22 points each.



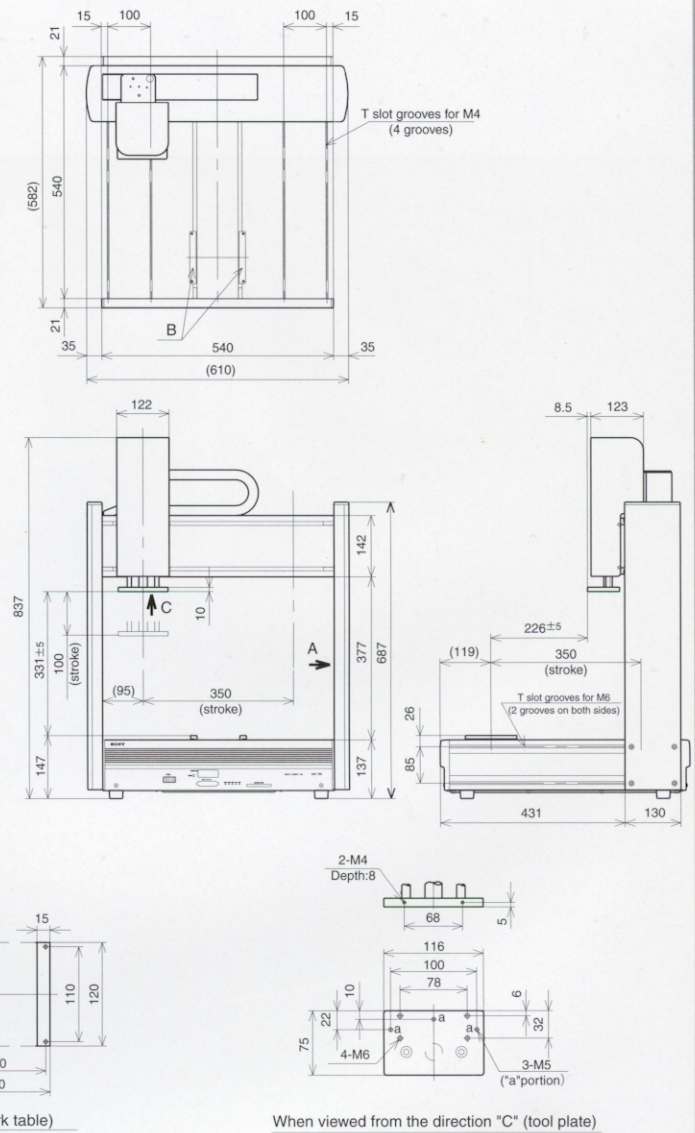
Sony**FA**

◆ Dimensions

4-axes Specifications



3-axes Specifications



Machine Specifications			
Item		4-axes specification	3-axes specification
Work envelope	X-axis, Y-axis	350mm	350 mm
	Z-axis	100mm	100 mm
	R-axis	0° to 360°	-
Maximum speeds	X-axis, Y-axis	500 mm/s	500 mm/s
	Z-axis	200 mm/s	200 mm/s
	R-axis	720°	-
Pose-repeatability (Positioning accuracy)	X-axis, Y-axis, Z-axis	± 0.02 mm or less	± 0.02 mm or less
	R-axis	± 0.1°	-
Maximum payload	Workpiece	10 kg	10 kg
	Tool	2 kg	2 kg
Resolution	X-axis, Y-axis, Z-axis	0.02 mm	0.02 mm
	R-axis	0.1°	-
Machine weight	Approx. 45 kg		
Operation ambient temperature	0~40°C		

Control Specifications	
Drive method	Pulse motor drive (open loop control)
Movement method	PTP,CP
Control axis count	Up to 4-axes (all axes simultaneous control)
Speed Control	During dispensing: 1 to 200 mm/s (linear and circular interpolation) During soldering: 0.1 to 10.0 mm/s (linear and circular interpolation)
Teaching method	Direct teaching via teaching pendant (option)
Program capacity	Full open programmable : Total 176 kbytes Memory card ("A" card) : Maximum 20 work programs for one application program.
Point data storage capacity	Full open programmable : 3072 points for one program Memory card ("A" card) : 2500 points
Programming method	Full open programmable : Described by the machine language LUNA Memory card ("A" card) : The standard software is supplied (option)
User I/O	Full open: 40 inputs (30 General-purpose)/40 outputs (33 General-purpose) Semi-programmable : 19 inputs (maximum)/17 outputs
Serial I/F	RS232C : One channel (general-purpose)
Power supply voltage	Single-phase 100 to 120 V, 200 to 240V ±10% 50/60Hz
Power consumption	300 VA
Ground	Cable: 2mm ² or bigger, resistance to the ground: 100 Ω or less

⚠ Safety note : Be absolutely sure familiarize yourself with the Operating Instructions to ensure that this product will be used safely.
*The specifications and exterior described in this catalog are subject to change without notice due to improvement.

**Sony Electronics
(Singapore) Pte Ltd.**
SPEC, No.52 Tuas Avenue 9,
Singapore 639193
TEL:8615858 FAX:8621521

**Sony Electronics Inc.
Factory Automation Division.**
16450 West Bernardo Drive/MZ-7140
Sandiego, CA 92127 U.S.A.
TEL:858-942-8218 FAX:858-942-9140

Sony Manufacturing Systems Corporation
1-10, Kiyoku-cho, Kuki-shi,
Saitama, 346-0035, JAPAN
Tel+81-480-23-4896
Fax+81-480-23-1425